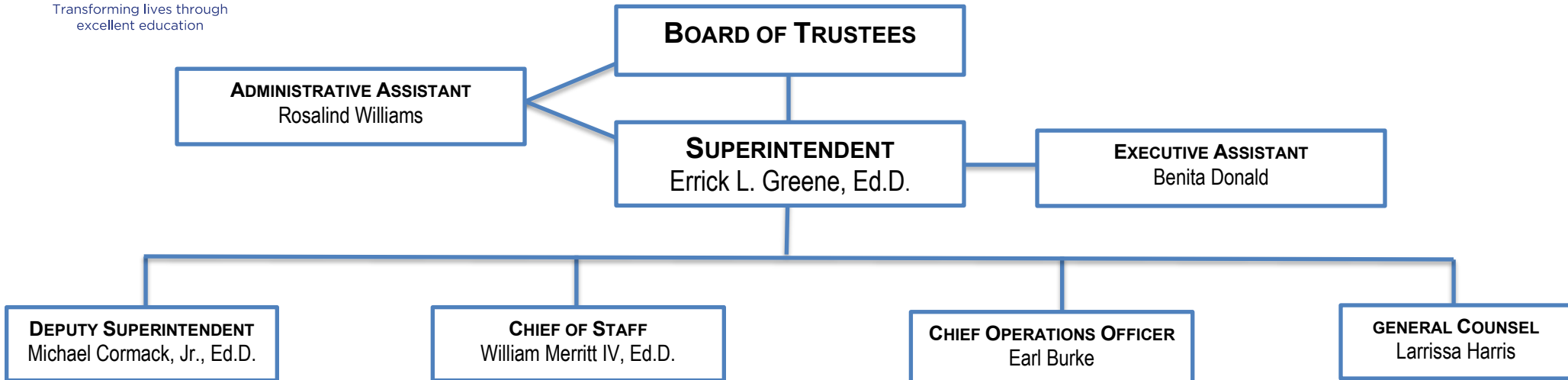




JACKSON PUBLIC SCHOOLS REORGANIZATIONAL CHART 2023-2024



DEPUTY SUPERINTENDENT

Deputy Superintendent
Michael L. Cormack, Jr., Ed.D.

Executive Assistant
Veldermere Williams

**Assistant Superintendent
Elementary Division I**
Kathleen Grigsby, Ed. D.
Administrative Secretary
Ora Dixon

**Assistant Superintendent
Elementary Division II**
Dionne Woody
Administrative Secretary
Tammy Dismuke

**School Support
Executive Director**
Rajeeni Clay Scott, Ph. D.
Administrative Secretary
Patricia Brown

**Assistant Superintendent
Middle School**
Chinelo Bosah Evans, Ed.D.
Administrative Secretary
Vacant

**Assistant Superintendent
High School**
Laketia Marshall Thomas
Administrative Secretary
Debra Lawson

**Athletics
Executive Director**
Daryl Jones

Administrative Secretary
Oranette Purvis

**Exceptional Education
Executive Director**
Talatha Bingham-Gibbs, Ed. D.

Administrative Secretary
Catherine Harris

**Teaching & Learning
Executive Director**
Kimberly Smith, Ed. D.

Administrative Secretary
Lori Harris

**Executive Director
Innovative Schools**
Samecia Stokes, Ed. D.

**Out of School Experience
Coordinator**
Alis DeJohn

**Climate & Wellness
Executive Director**
Amanda Thomas

**Executive Director
Advance Academics**
Anthony Moore, Ed.D.

Administrative Secretary
Barbara Roach

ASSISTANT SUPERINTENDENT

Assistant Superintendent Elementary Division I

Kathleen Grigsby, Ed. D.

Administrative Secretary

Ora Dixon

District Instructional Coach

Barbara Griffith-Edwards, Instructional Coach, ELA
Dr. Kierra Garner, Instructional Coach, Math
Dominique McInnis, Instructional Coach, Science

Barack H. Obama Elementary School

Dr. Jamiette Carter, Principal

Bates Elementary School

Dr. Rachel Ellis-Coleman, Principal
Dr. Josie Blake, Assistant Principal

Boyd Elementary School

Joseph Collins, Principal
Dr. Queietasha Younger, Assistant Principal

Casey Elementary School

Vanessa Hinton-Dean, Principal
Tempestt Harvey, Assistant Principal

Galloway Elementary School

Linda Murray, Principal
Kristen Powell, Assistant Principal

Isable Elementary School

Catrina Crawford, Principal
Vacancy, Assistant Principal

Johnson Elementary School

Guyneisha Johnson, Principal

McWillie Elementary School

Dr. Sara Harper, Principal
Stacey Hughes, Assistant Principal

North Jackson Elementary School

Jocelyn Smith, Principal
Ursula Watson, Assistant Principal

Oak Forest Elementary School

Camesha Hatchett, Principal
Precious Malembeka, Assistant Principal

Pecan Park Elementary School

Jarett Benson, Principal Interim
Vacant, Assistant Principal

Smith Elementary School

Stephanie Wilson, Principal

Spann Elementary School

Lori Torrey, Principal
Machaela Barnes, Assistant Principal

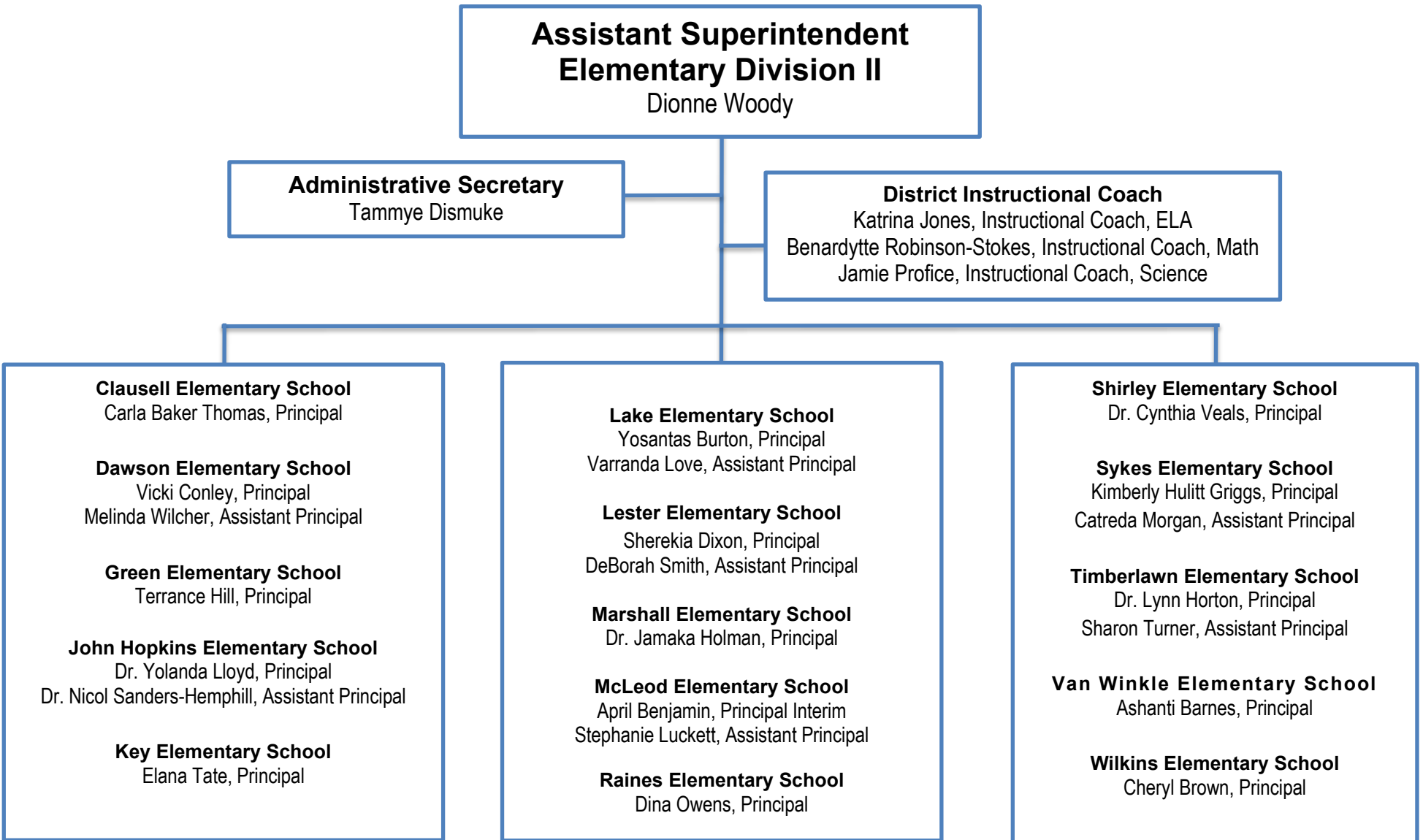
Walton Elementary School

LaRoy Merrick, Principal
Denise Thaggard, Assistant Principal

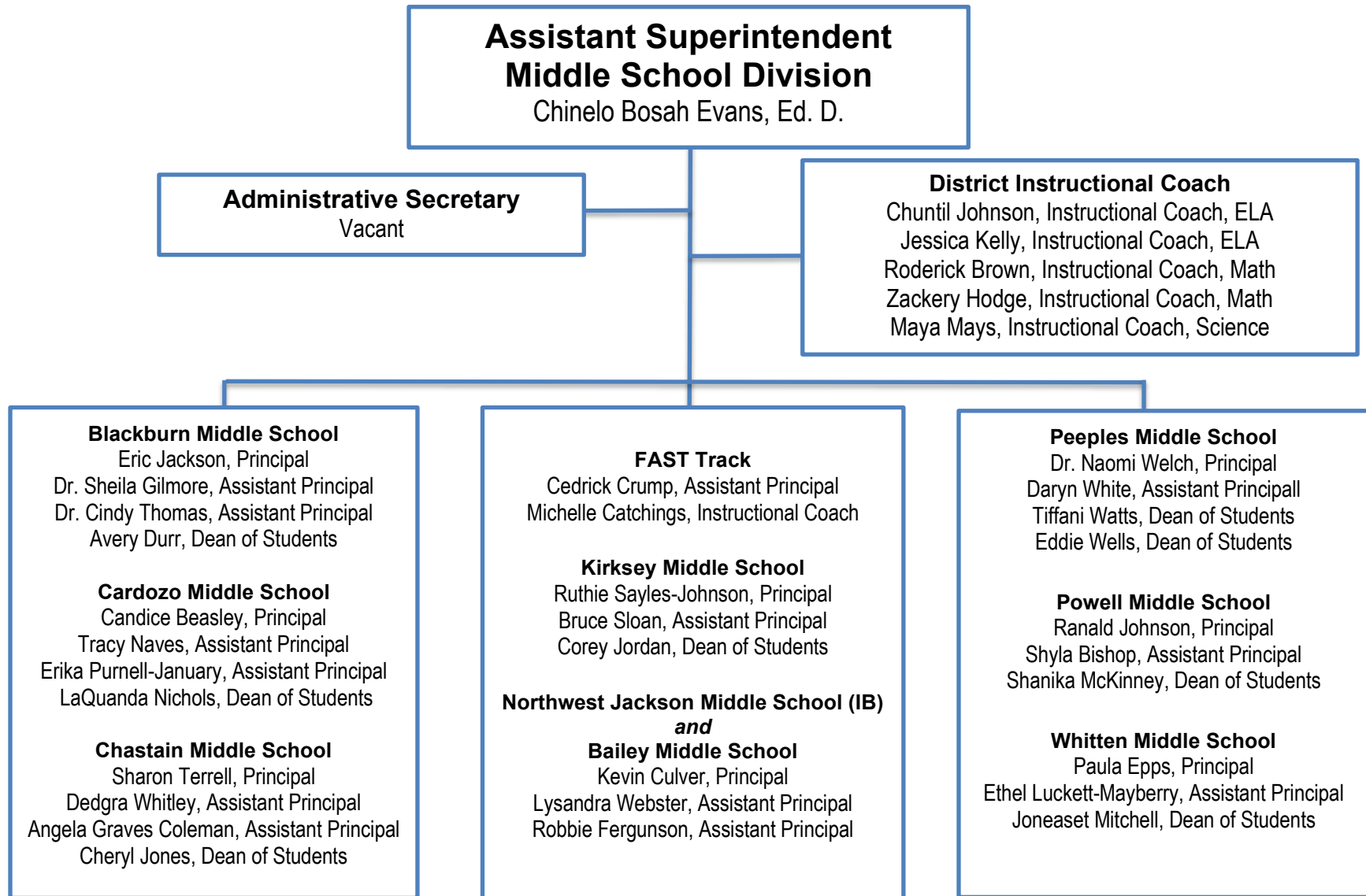
Wells

Dr. Kescher Love Rankin, Principal

ASSISTANT SUPERINTENDENT



ASSISTANT SUPERINTENDENT



ASSISTANT SUPERINTENDENT

**Assistant Superintendent
High School Division**
Laketia Marshall-Thomas

Administrative Secretary
Debra Lawson

College and Career Readiness Manager
Jana Williams

Director of Academics
Jannifer Norwood

District Instructional Coach
Wyatt Smith, Instructional Coach, ELA and Online Learning
Tawaii Collins, Instructional Coach, ELA
Adrienne McDowell, Instructional Coach, ELA
Felisha Shelby, Instructional Coach, Math
Christopher Evans, Instructional Coach, Math
Vannessa Patterson, Instructional Coach, Math
Denavia Bell, Instructional Coach, Science
Aisha Cork, Instructional Coach, Science
Jennifer Lewis, Instructional Coach, History
Kayla Vanderford, Instructional Coach, Intervention

Callaway High School
Dr. Shemeka McClung, Principal
Stacey Bailey, Assistant Principal
Kelly Matin, Assistant Principal
Dr. Crystal Hill, Assistant Principal
Corice Anderson Greenwood, Dean of Students

Capital City Alternative School
Tanyatemeika Mason, Principal
Dewayne Harris, Assistant Principal
Dr. Emorie Griffin, Assistant Principal
Shelby Rutland, Assistant Principal

Career Development Center
Dr. Eric Cook, Principal
Calvin Melton, Assistant Principal
Vacant, Assistant Principal
Kenneth Devine, Assistant Principal

Forrest Hill High School
Torrey Hampton, Principal
Patrease Edwards, Assistant Principal
Ms. Shalisha Robinson, Assistant Principal
Dr. Richard Chano, Assistant Principal
Jewel Jackson, Dean of Students

Jim Hill High School
Bobby Brown, Principal
Larry Armstrong, Assistant Principal
Dr. Shaletta Wilson-Fisher, Assistant Principal
Shawnte Butler, Assistant Principal
Vacant, Dean of Students

Lanier Junior Senior High School
Dr. Valarie Bradley, Principal
Miketa Davis, Assistant Principal
Dr. Blake Bradley, Assistant Principal
Olivia Knight, Assistant Principal
Harold Stanfield, Assistant Principal

Murrah High School
Dr. Alvanette T. Buchanan, Principal
Dr. Lisa Williams-Moore, Assistant Principal
Christopher Sylvester, Assistant Principal
Dr. Alonda Nicholson, Assistant Principal
William Crowley, Assistant Principal
Rekesha Gholar, Dean of Students

Provine High School
Dr. Shelita Brown, Principal
Jerrial Dawson, Assistant Principal
Dr. Collins Lanyuy, Assistant Principal
Keegan Love, Assistant Principal
James Rush, Dean of Students

Wingfield High School
Roderick Smith, Principal
Dr. Erica Gee-Bradley, Assistant Principal
Spencer Gattlin, Assistant Principal
Frankie Johnson, Dean of Students

JPS-Tougaloo Early College High School
Ashley Molden, Principal

Re-Engaging for All to Progress (REAP)
Dr. Shenetra Burse-Dawson, Principal

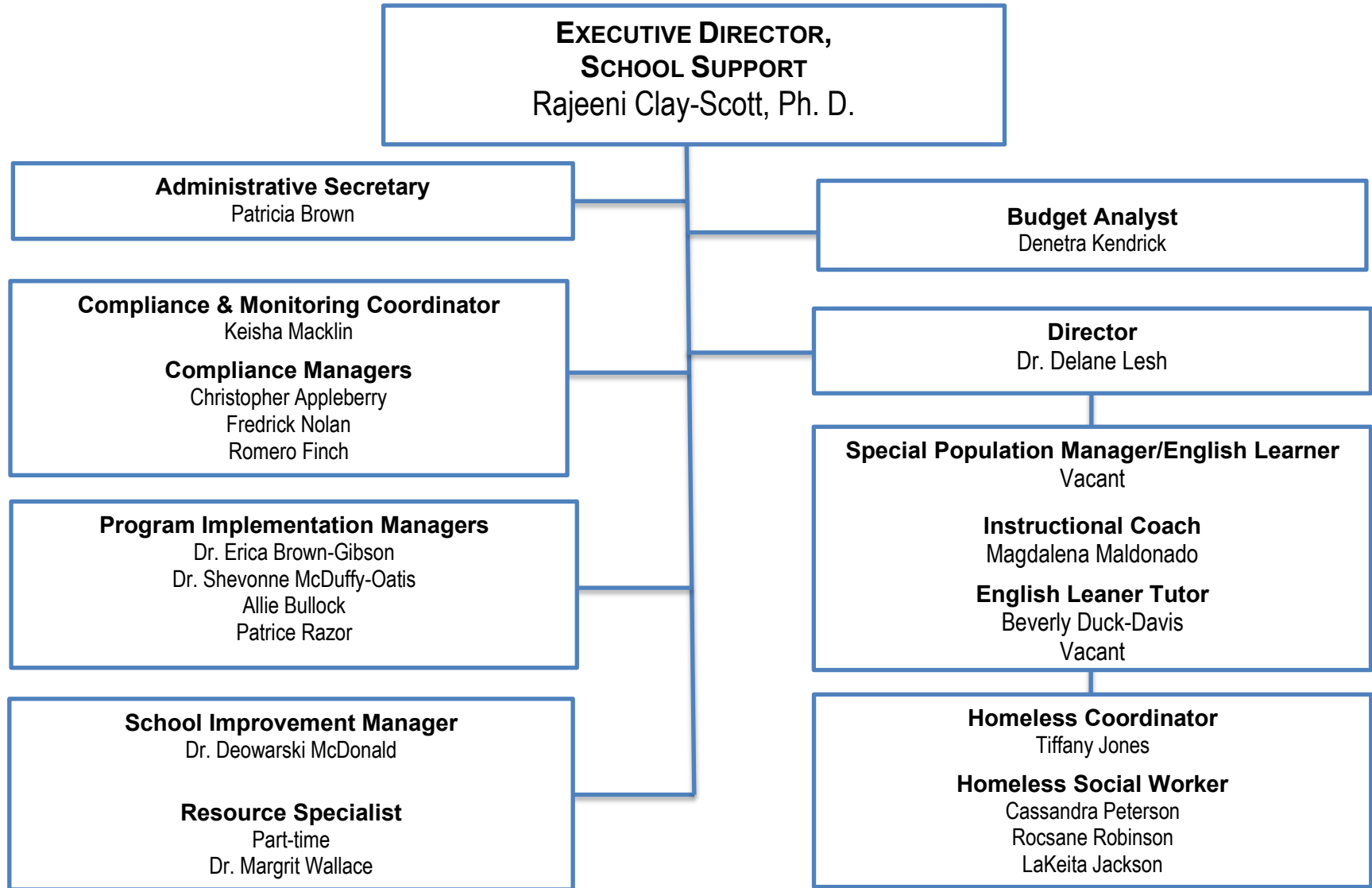
Henley-Young Juvenile Center
Antonius Caldwell, Principal

Junior Reserve Officer Training Corp (JROTC)
Col. Fredrick Brown, DAI

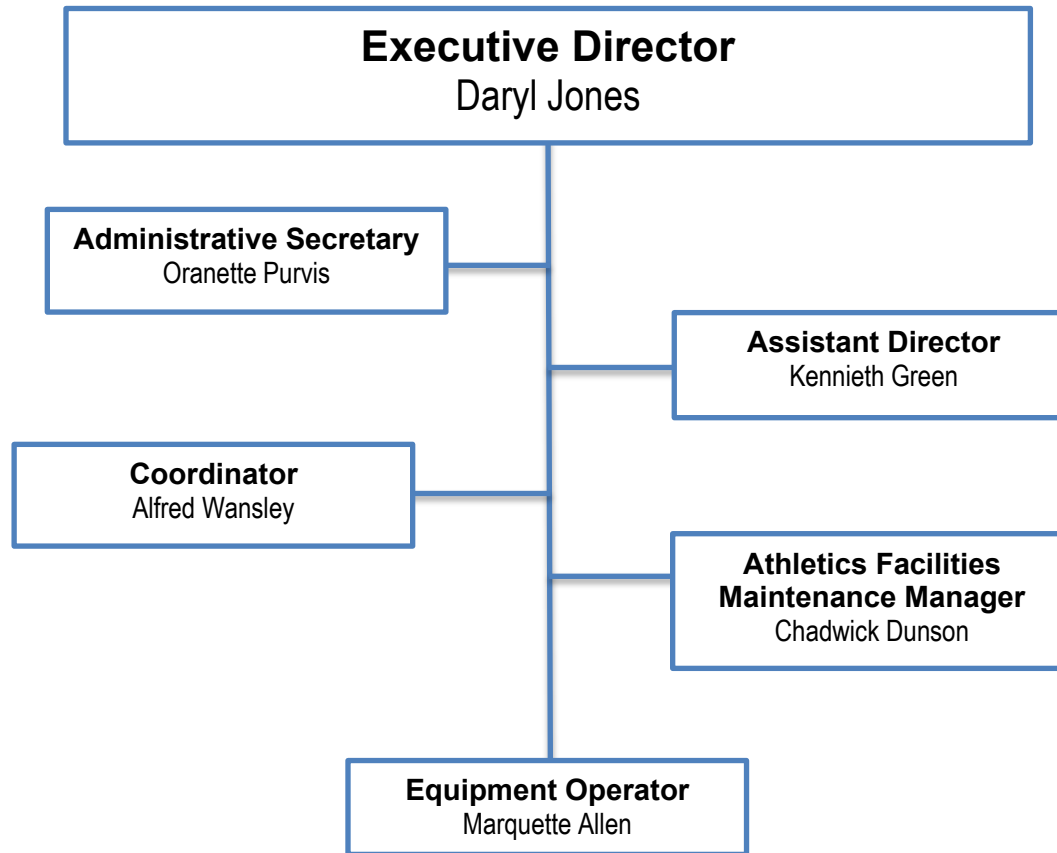
Environmental Learning Center (ELC)
Jeffery Gibson, Coordinator

Jackson Middle College
Victoria Scantlebury, Coordinator

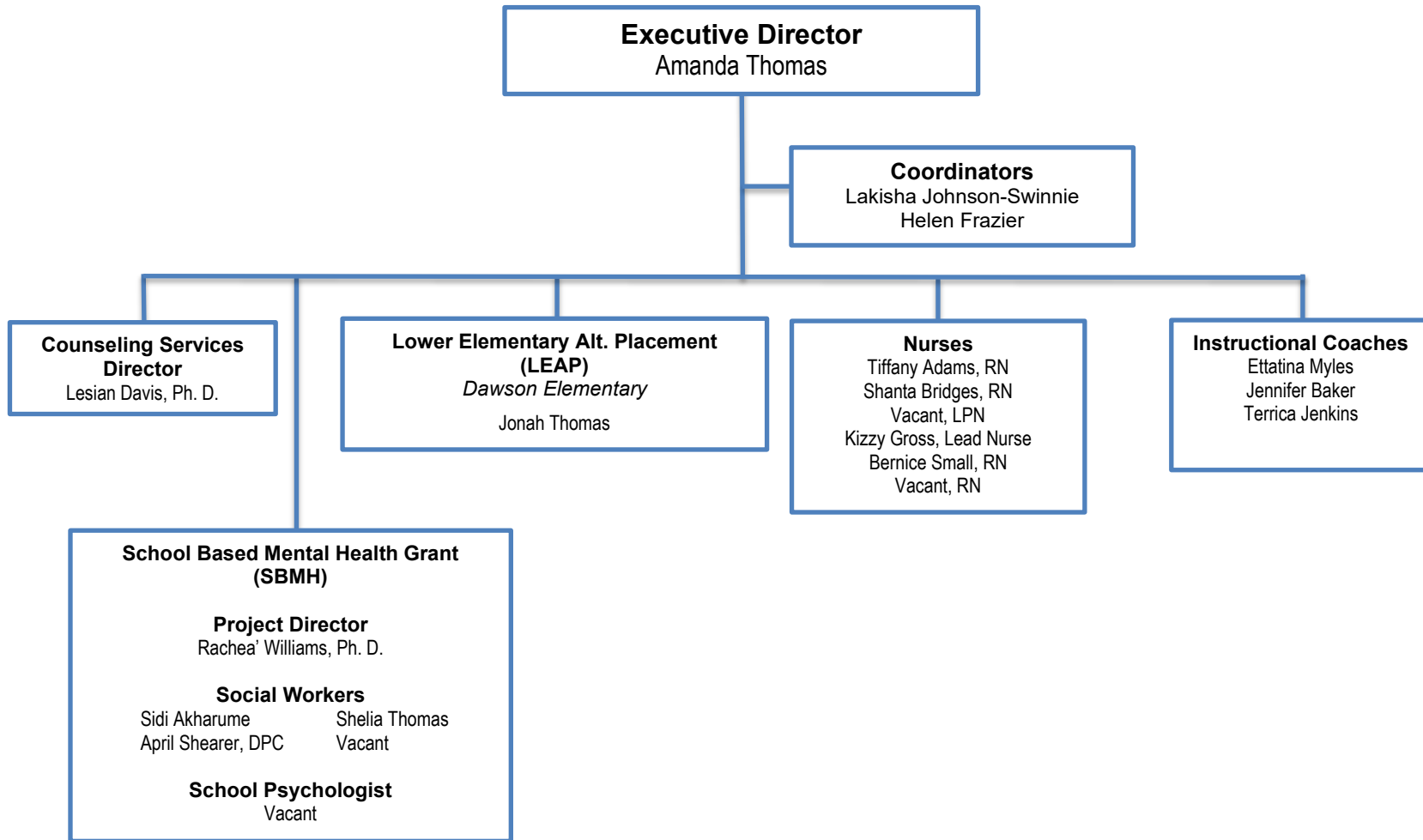
OFFICE OF SCHOOL SUPPORT



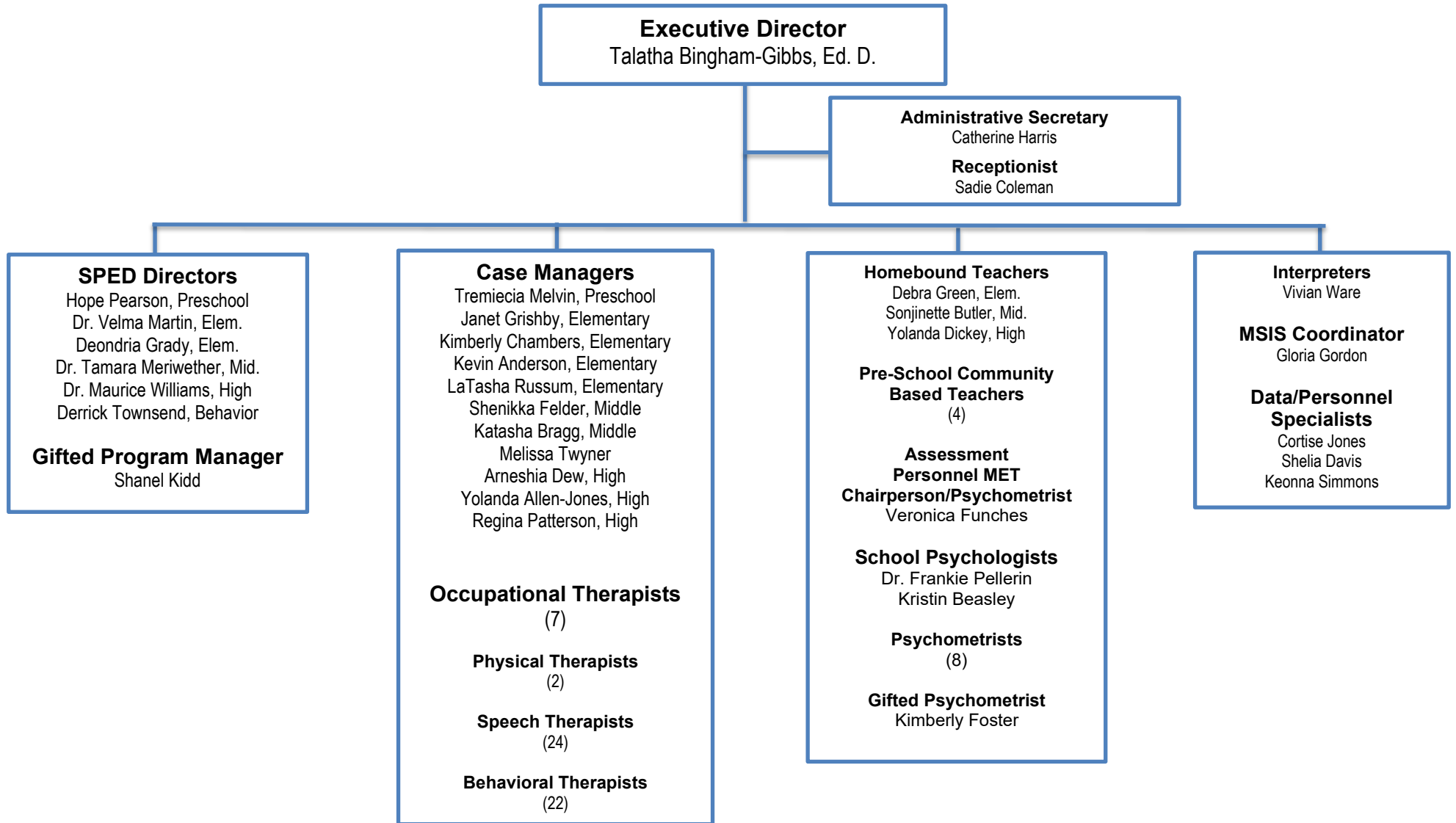
ATHLETICS



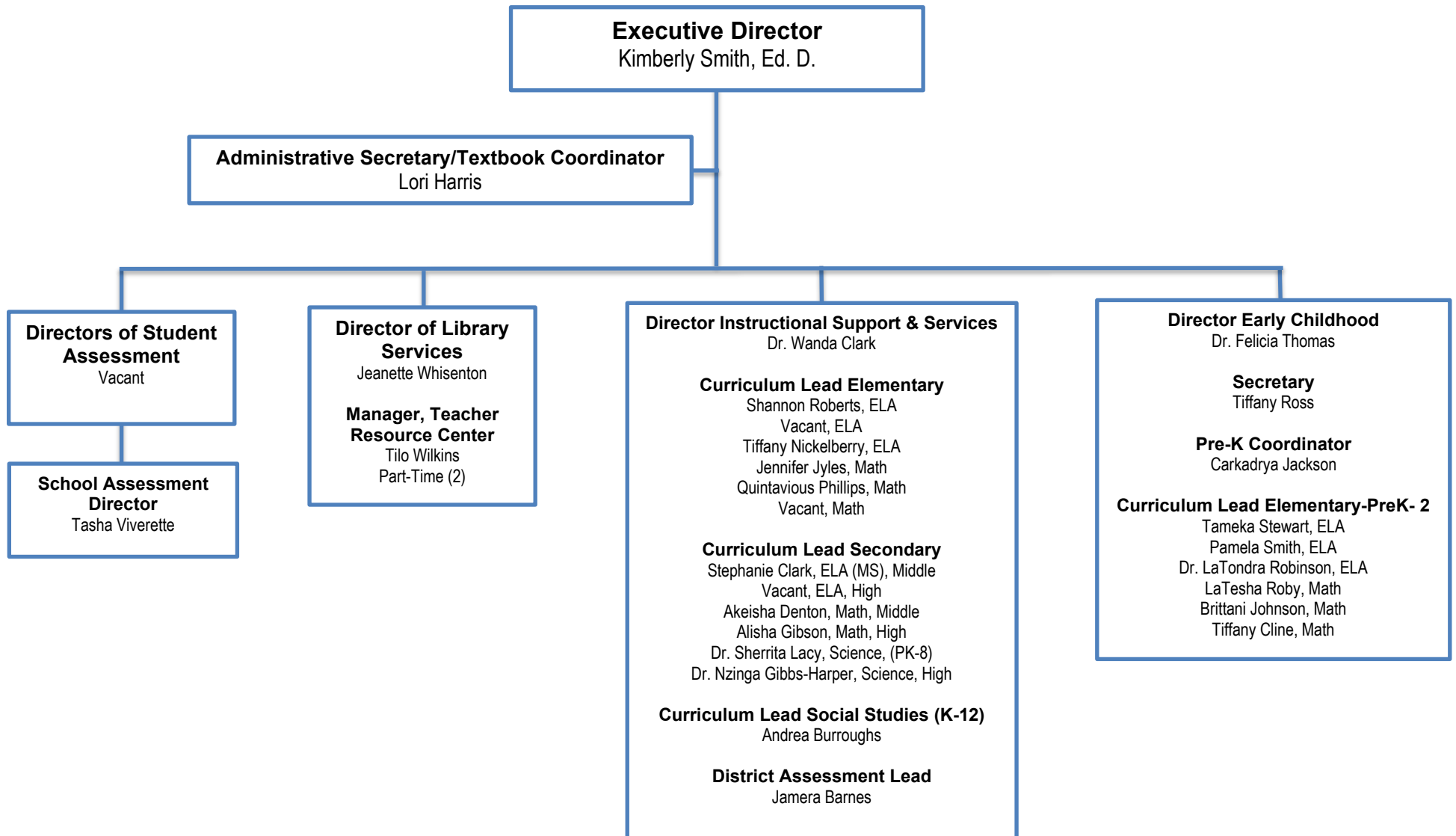
CLIMATE AND WELLNESS



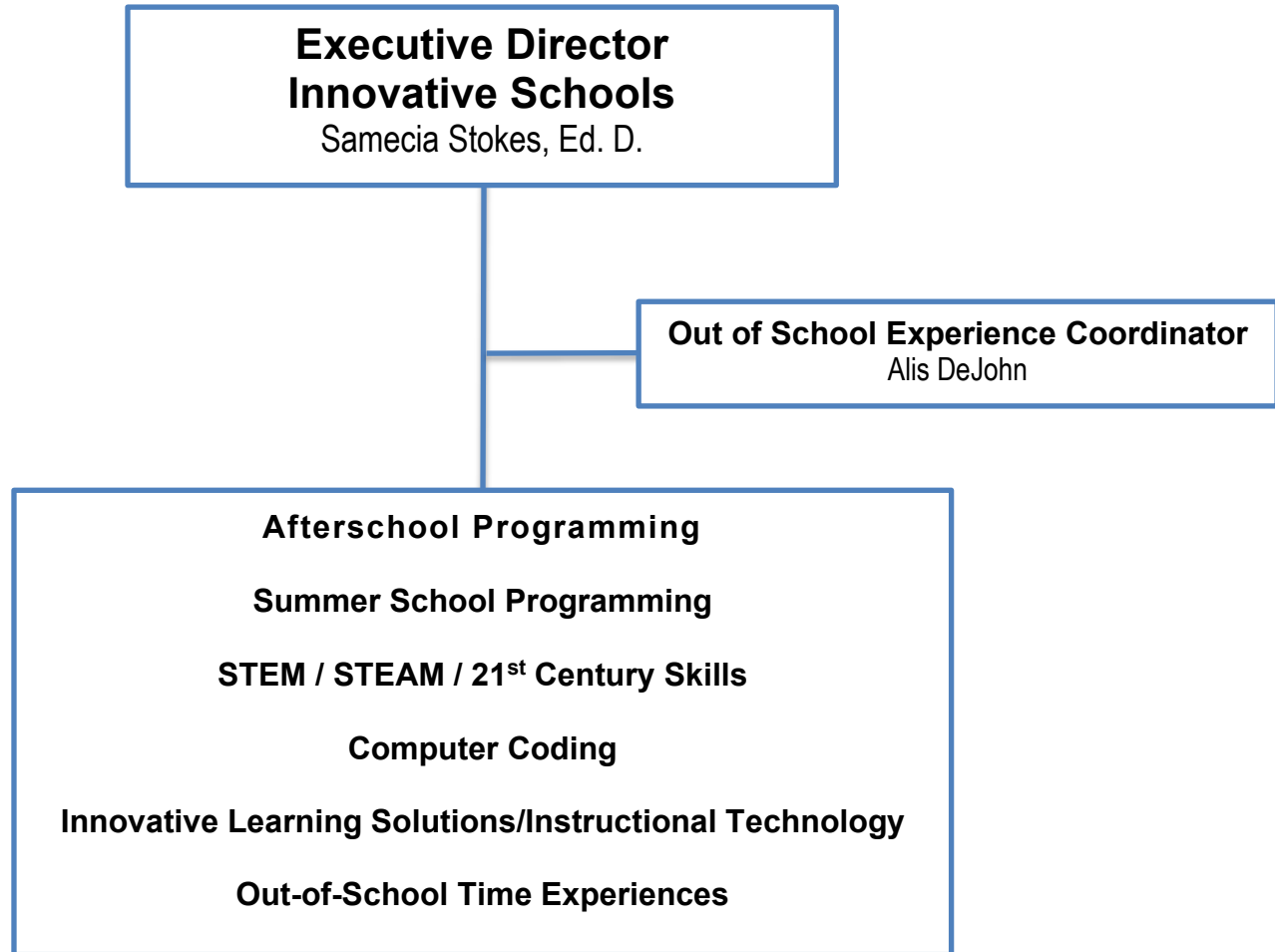
EXCEPTIONAL EDUCATION



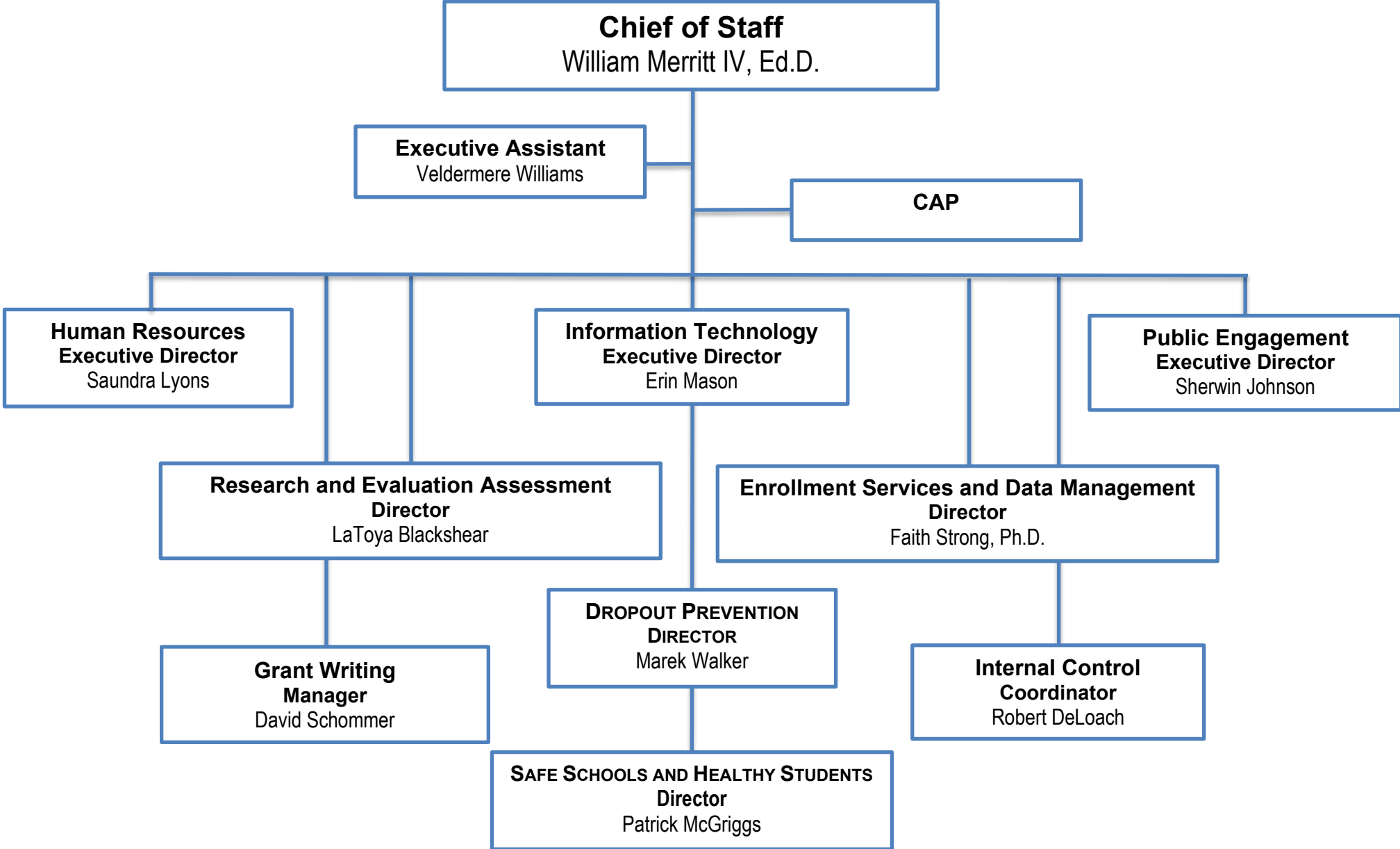
TEACHING AND LEARNING



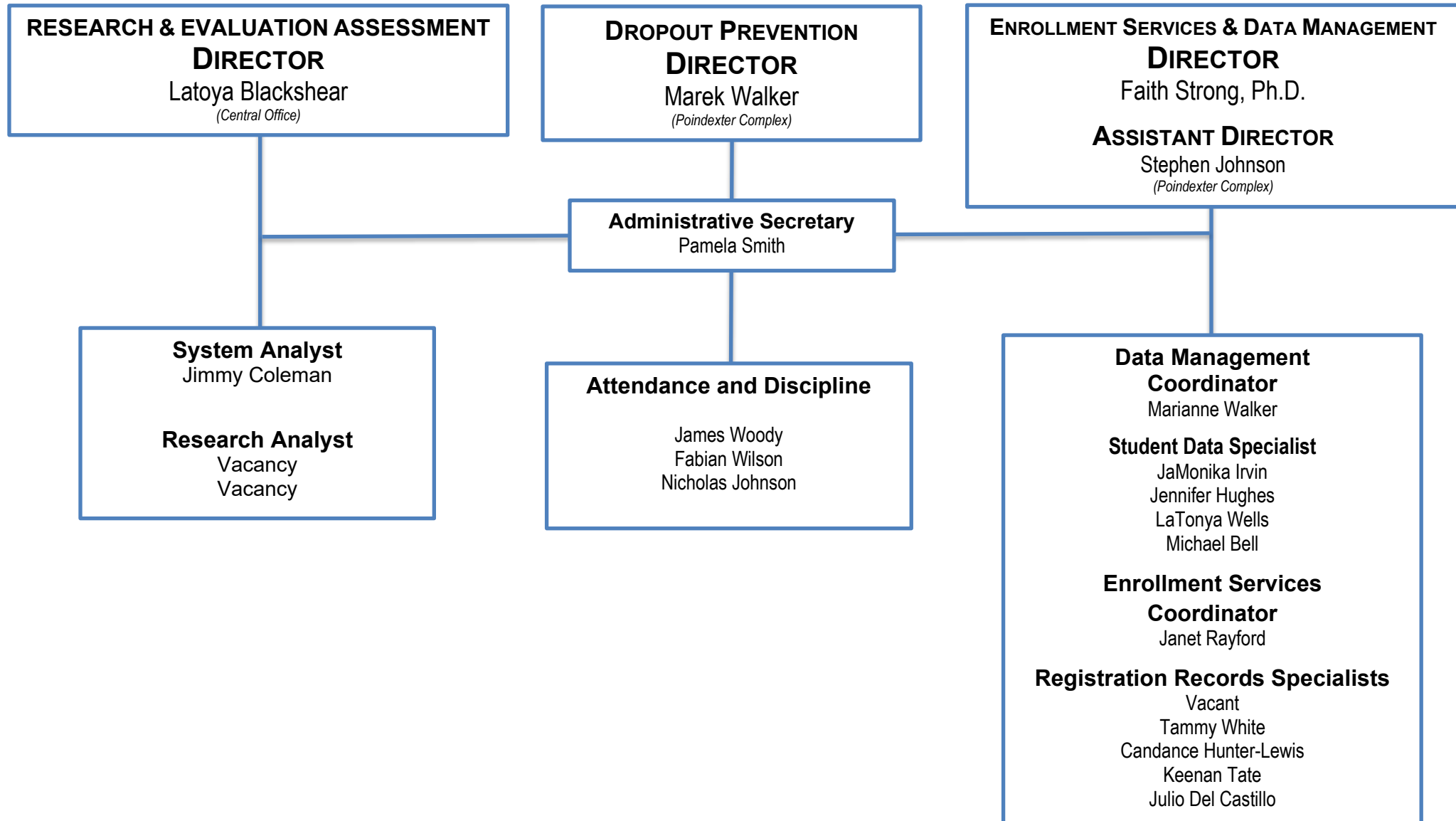
INNOVATIVE SCHOOLS



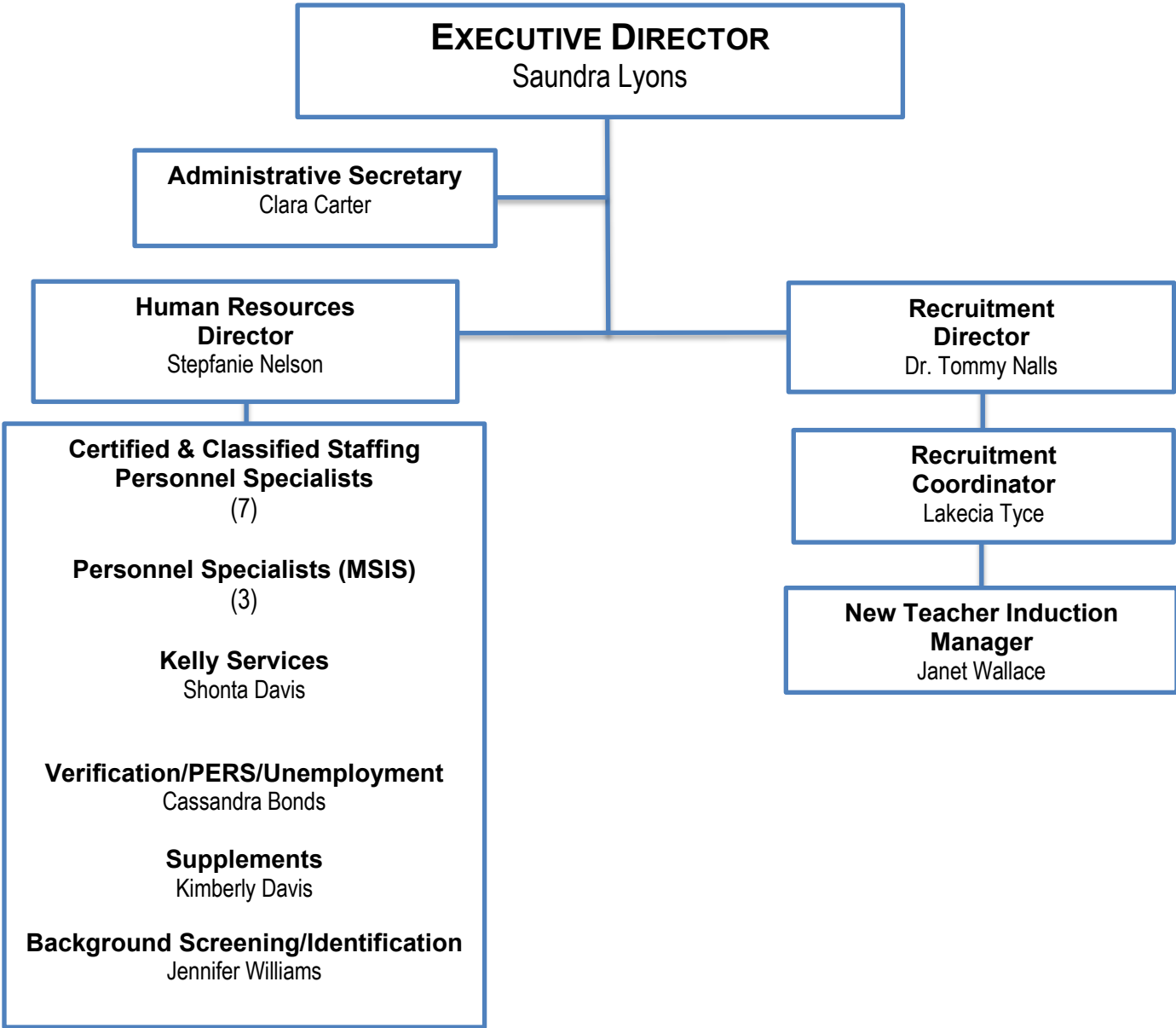
CHIEF OF STAFF



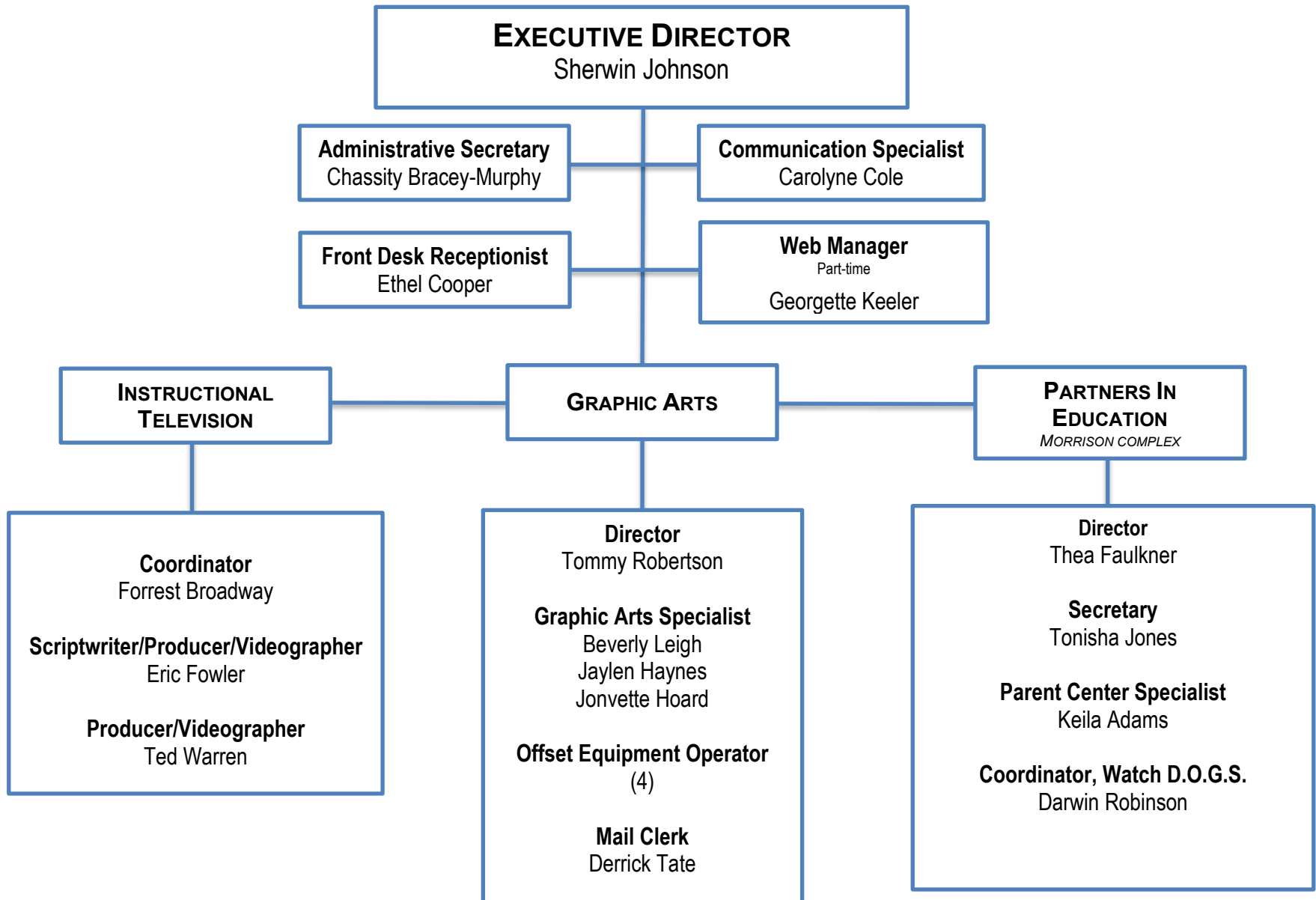
RESEARCH ENROLLMENT ACCOUNTABILITY



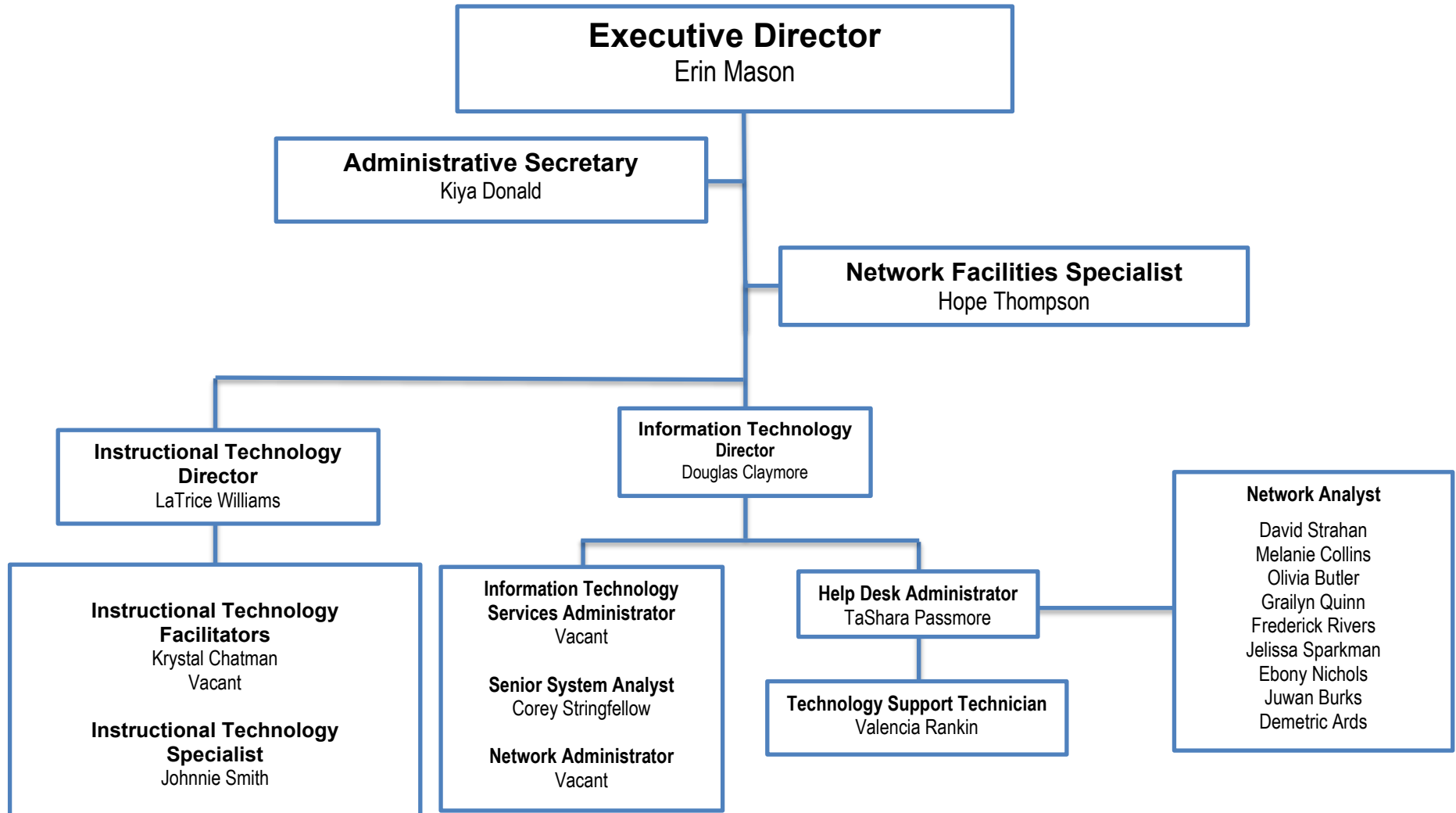
HUMAN RESOURCES



PUBLIC ENGAGEMENT



INFORMATION TECHNOLOGY SERVICES



FINANCE & OPERATIONS

Chief Finance & Operations Officer

Earl Burke

Central Office and Enoch Complex

Executive Assistant

Phillis Fowler

**Business Services
Executive Director**

Margaret Purnell

**Facilities Operations
Executive Director**

Sandra Robinson

**Child Nutrition
Executive Director**

Marc Rowe

**Assets & Property
Executive Director**

Wilton Jackson

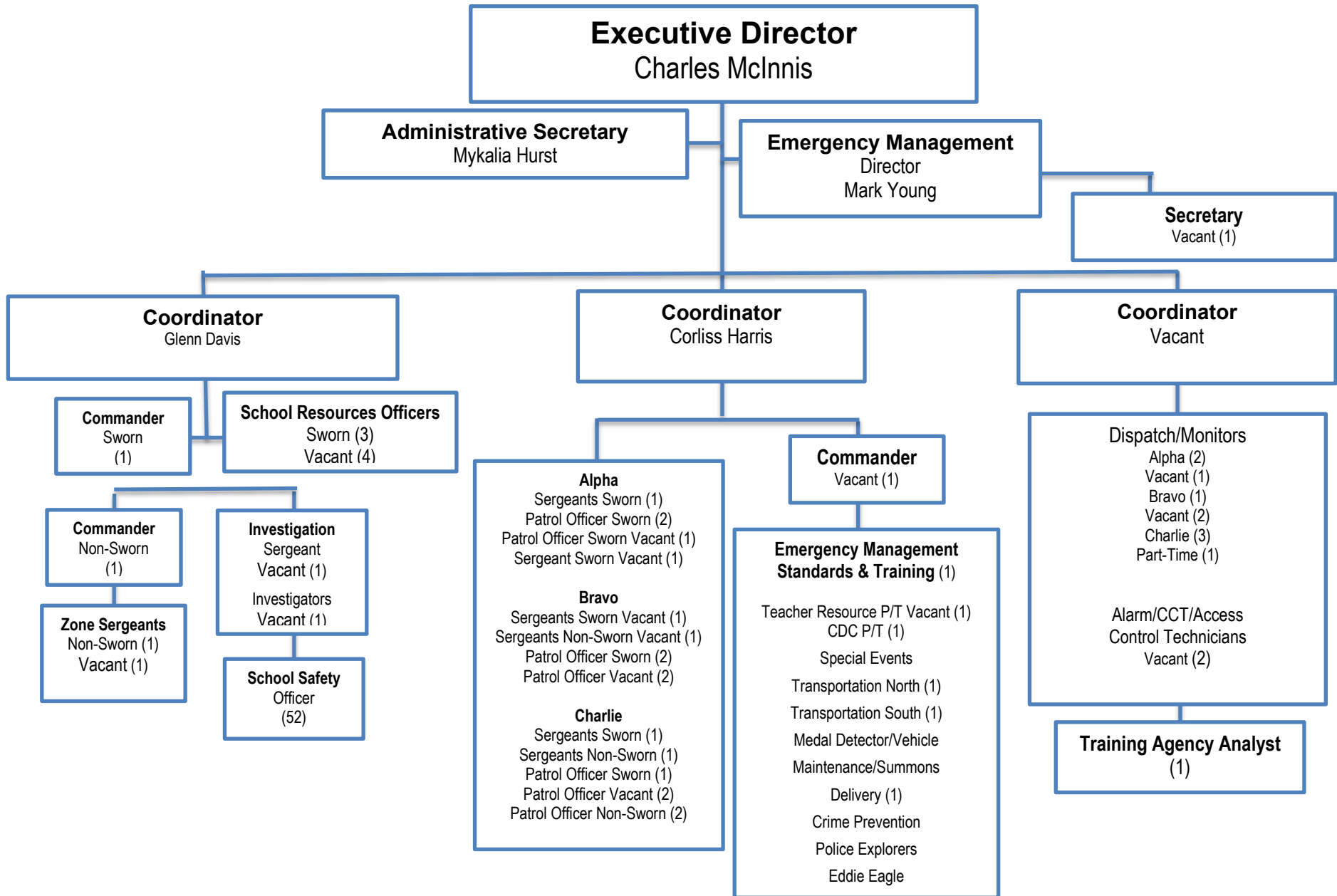
**Police & Emergency Management
Executive Director**

Charles McInnis

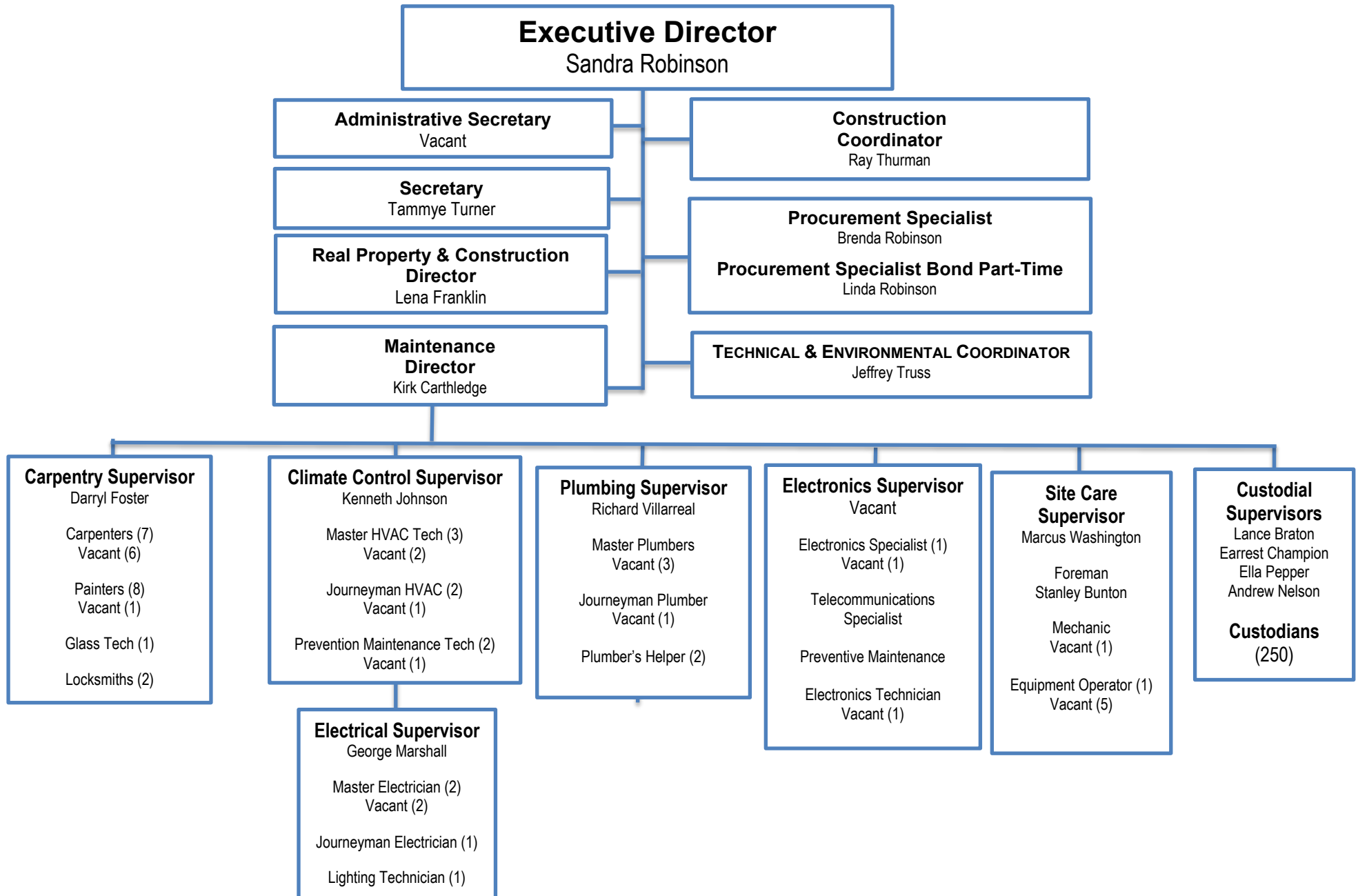
**Transportation
Executive Director**

Stephanie Harris Martin

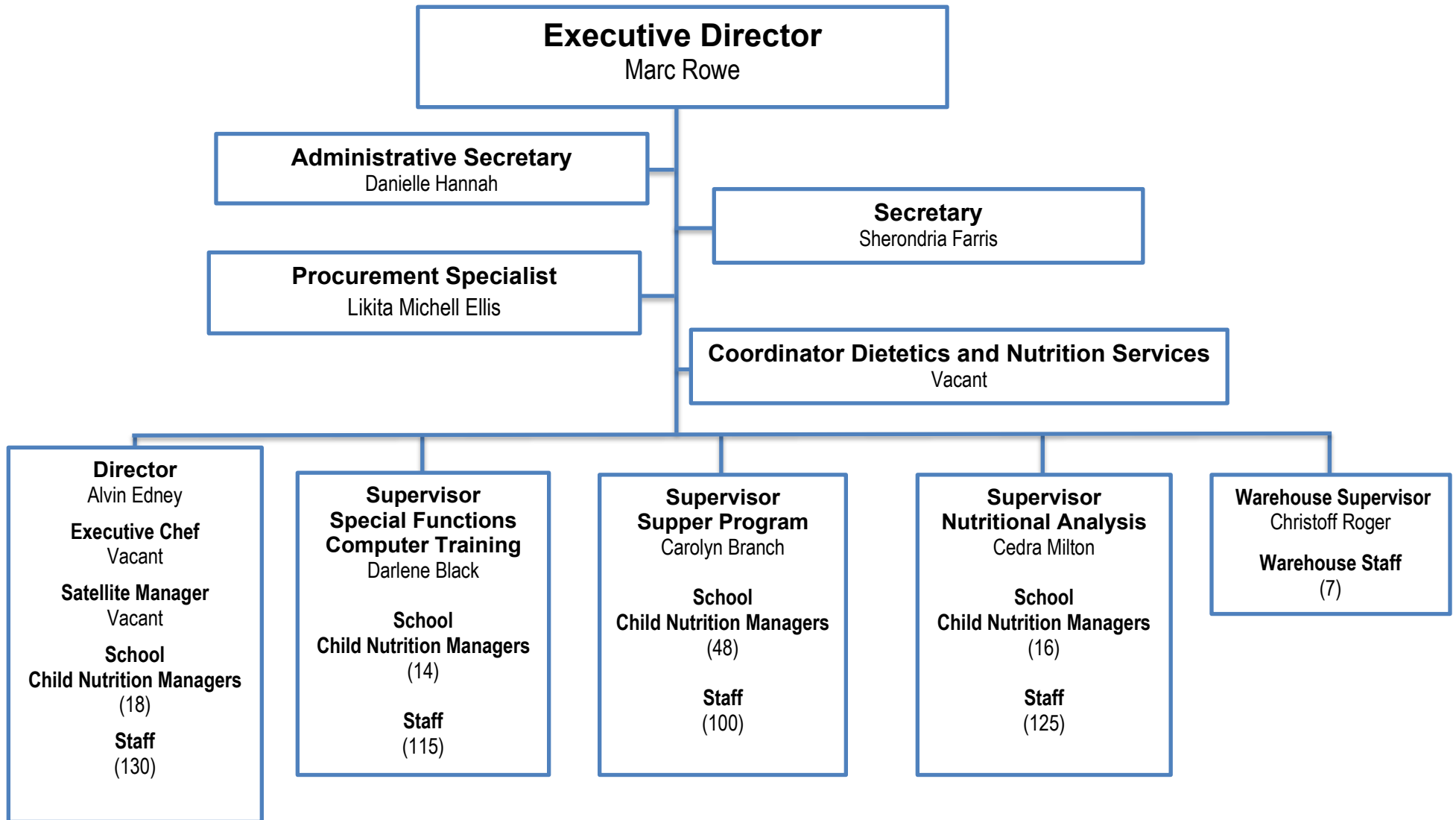
CAMPUS ENFORCEMENT



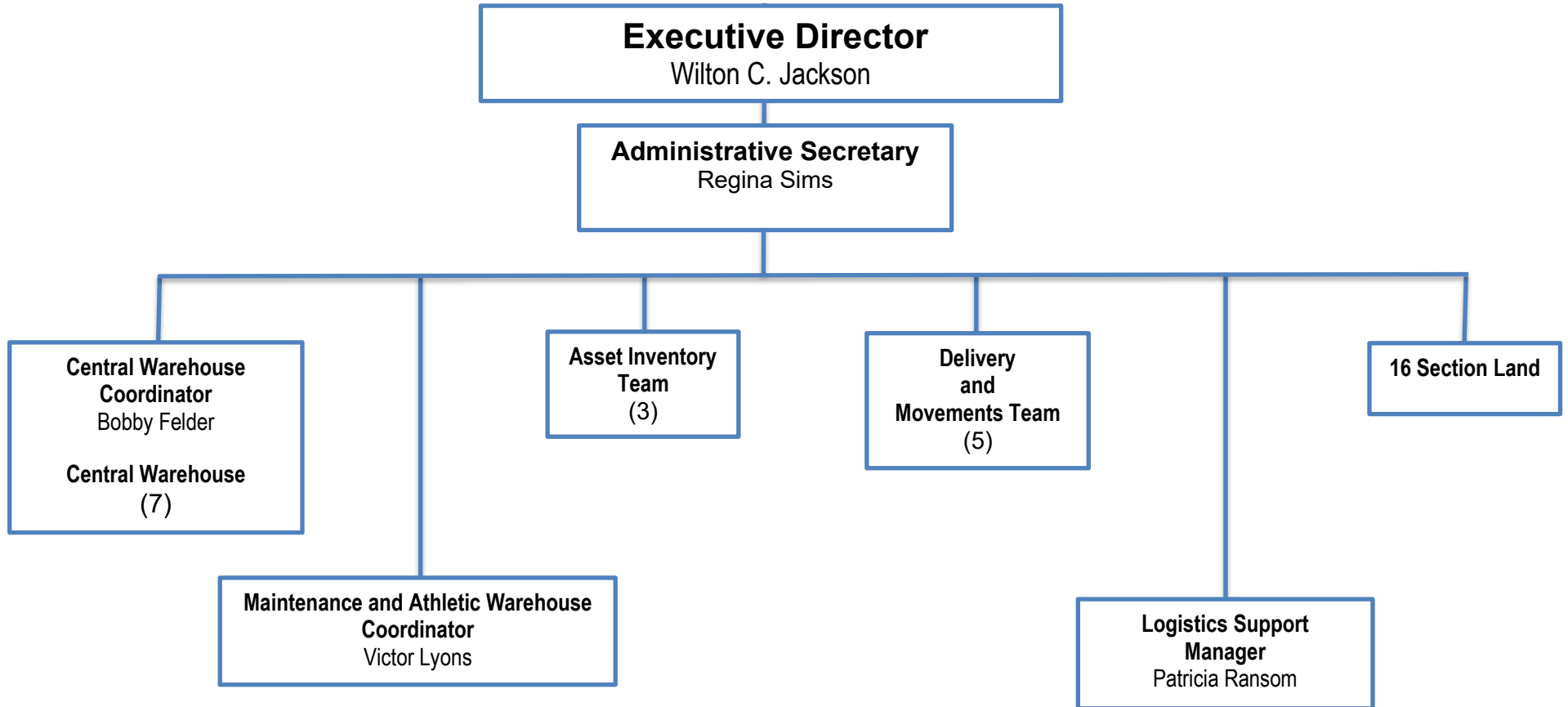
FACILITIES & OPERATIONS



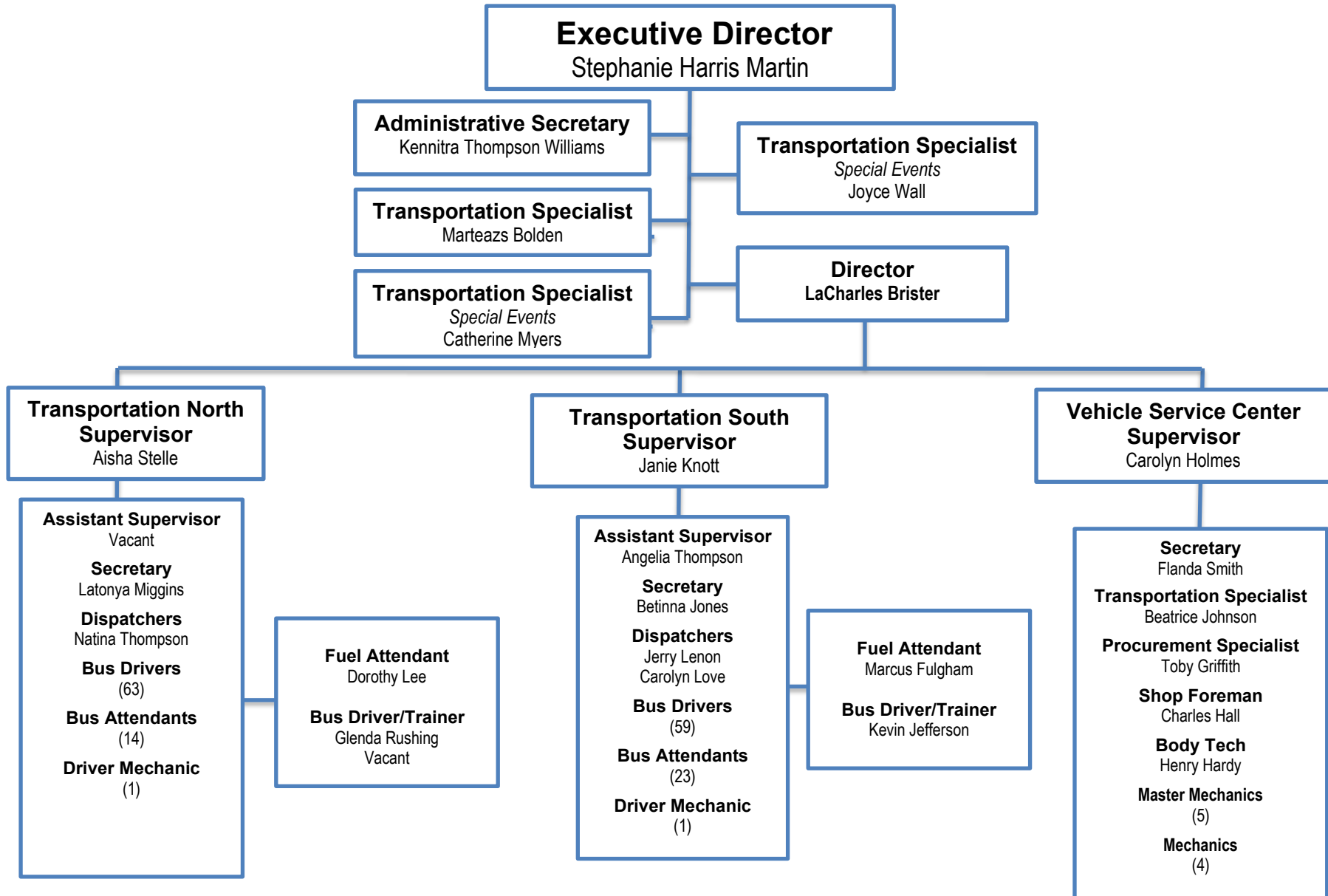
CHILD NUTRITION DEPARTMENT



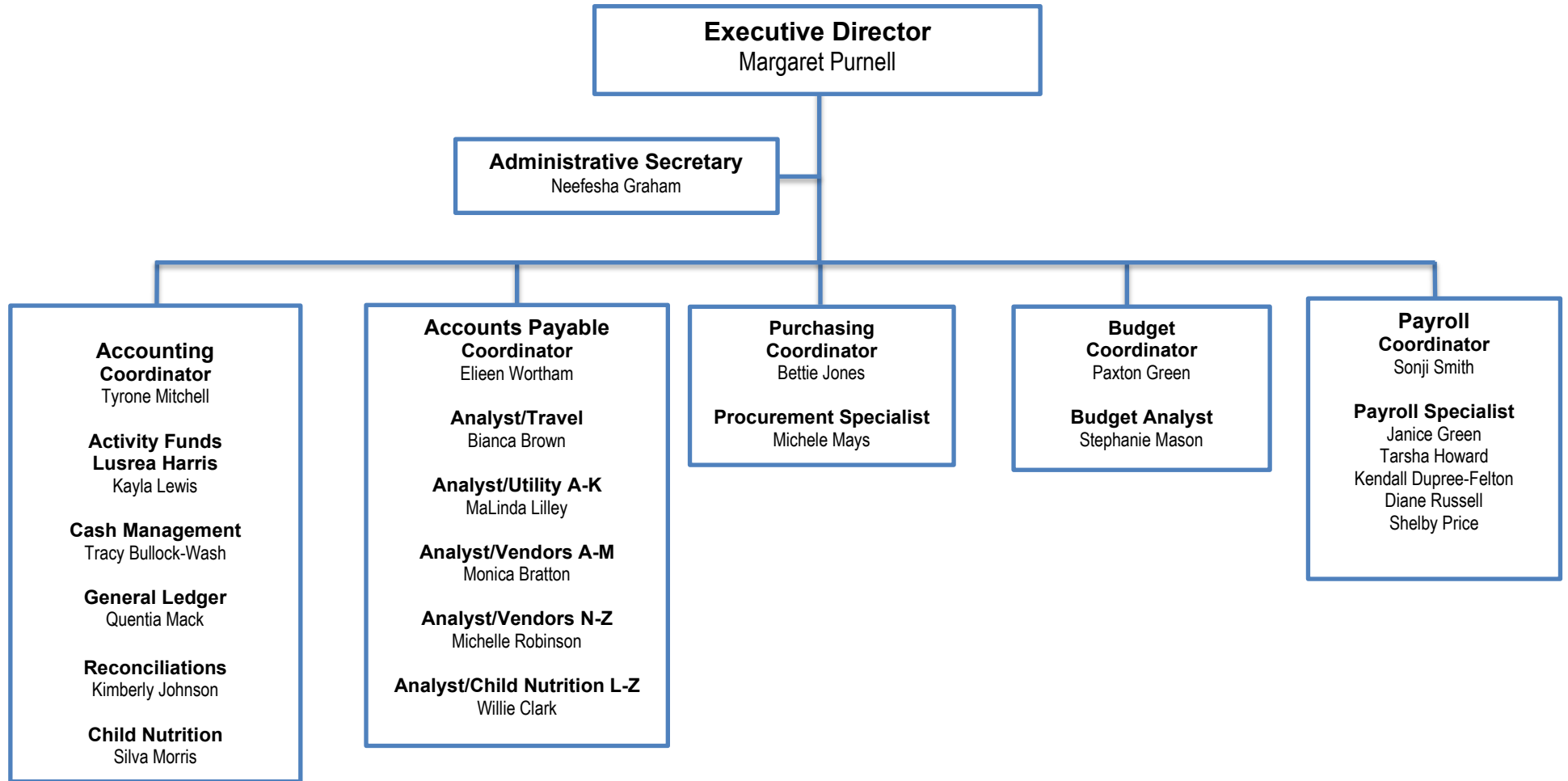
ASSETS AND PROPERTY



TRANSPORTATION DEPARTMENT



BUSINESS SERVICES



GENERAL COUNSEL

